

- LEGEND**
- SANITARY SEWER CLEANOUT
 - SANITARY SEWER MANHOLE
 - FIRE HYDRANT
 - SANITARY SEWER LINE
 - WATER LINE
 - PROPOSED SANITARY SEWER MANHOLE
 - PROPOSED SANITARY SEWER CLEANOUT
 - PROPOSED FIRE HYDRANT W/ 25' COVERAGE RADIUS
 - PROPOSED SANITARY SEWER LINE
 - PROPOSED WATER LINE

FLOOD NOTE
 AS PER FLOOD INSURANCE RATE MAP, COMMUNITY PANEL NUMBER 48540 0216 F, MAP NUMBER 48441 0216F, MAP REVISED JANUARY 6, 2012; THIS PROPERTY IS NOT LOCATED IN A FEDERALLY DESIGNATED FLOOD AREA.

AREA TABLE BLOCK A

LOT #	SQ. FT.	ACRES
16	7300	0.168
17	7300	0.168
18	7390	0.170
19	16223	0.372
20	9110	0.209
21	7350	0.169
22	7350	0.169
23	7350	0.169
24	7350	0.169
25	7350	0.169
26	7350	0.169
27	7350	0.169
28	7350	0.169
29	7350	0.169
30	8547	0.196
31	219840	5.047

AREA TABLE BLOCK B

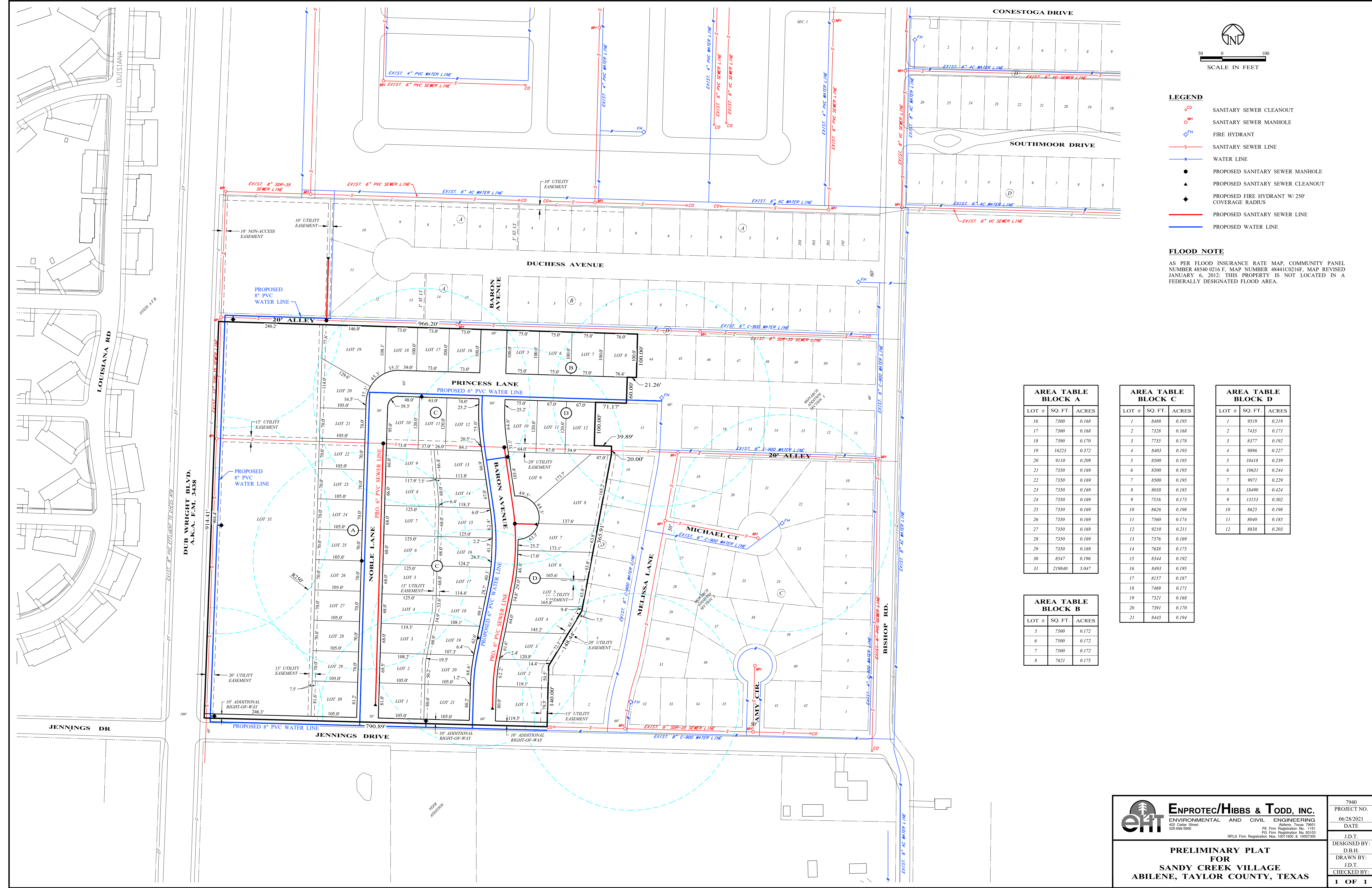
LOT #	SQ. FT.	ACRES
5	7500	0.172
6	7500	0.172
7	7500	0.172
8	7621	0.175

AREA TABLE BLOCK C

LOT #	SQ. FT.	ACRES
1	8488	0.195
2	7328	0.171
3	7735	0.178
4	8403	0.193
5	8500	0.195
6	8500	0.195
7	8500	0.195
8	8038	0.185
9	7516	0.173
10	8626	0.198
11	7560	0.174
12	9210	0.211
13	7376	0.169
14	7638	0.175
15	8344	0.192
16	8493	0.195
17	8157	0.187
18	7469	0.171
19	7321	0.168
20	7391	0.170
21	8445	0.194

AREA TABLE BLOCK D

LOT #	SQ. FT.	ACRES
1	9519	0.219
2	7435	0.171
3	8377	0.192
4	9896	0.227
5	10418	0.239
6	10631	0.244
7	9971	0.229
8	18490	0.424
9	13153	0.302
10	8625	0.198
11	8040	0.185
12	8838	0.203



EHT ENPROTEC/HIBBS & TODD, INC.
 ENVIRONMENTAL AND CIVIL ENGINEERING
 402 Cedar Street, Abilene, Texas 79601
 PE Firm Registration No. 1151, PG Firm Registration No. 50103, RPLS Firm Registration Nos. 10011900 & 10007090

PRELIMINARY PLAT FOR SANDY CREEK VILLAGE ABILENE, TAYLOR COUNTY, TEXAS

7940	PROJECT NO.
06/28/2021	DATE
J.D.T.	DESIGNED BY:
D.B.H.	DRAWN BY:
J.D.T.	CHECKED BY:
1 OF 1	